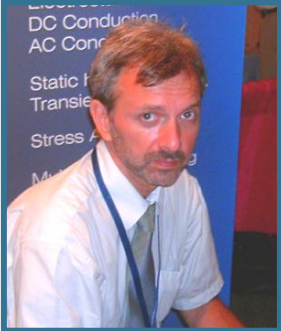




# QuickField 6.0



**Vladimir Podnos,**  
Director of Marketing and Support,  
Tera Analysis Ltd.



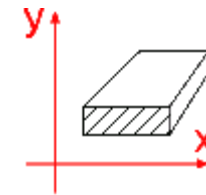
**Alexander Lyubimtsev,**  
Support Engineer, Tera Analysis Ltd.



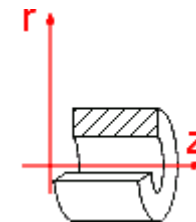
**Sergey Ionin**  
Support engineer, Tera Analysis Ltd.

# QuickField: before 6.0

<b>Magnetic analysis suite</b>	
Magnetic Problems	2D Magnetostatics
	2D AC Magnetics
	2D Transient Magnetics
<b>Electric analysis suite</b>	
Electric Problems	2D Electrostatics and 2D DC Conduction
	2D AC Conduction
	Transient 2D Electric field
<b>Thermostructural analysis suite</b>	
Thermal and mechanical problems	Steady-State 2D Heat transfer
	Transient 2D Heat transfer
	2D Stress analysis



plane-parallel

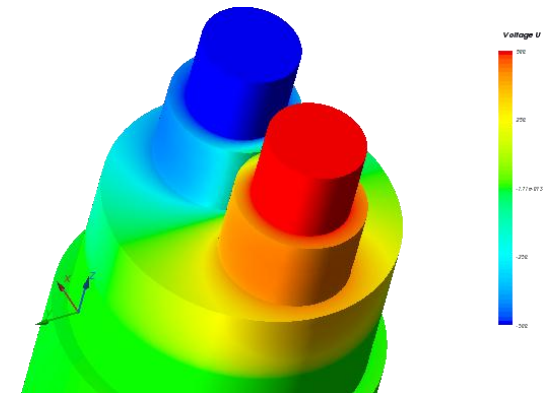


axisymmetric



# QuickField 6.0

<b>Magnetic analysis suite</b>	
Magnetic Problems	2D Magnetostatics
	2D AC Magnetics
	2D Transient Magnetics
<b>Electric analysis suite</b>	
Electric Problems	2D Electrostatics and 2D DC Conduction
	2D AC Conduction
	Transient 2D Electric field
<b>Thermostrostructural analysis suite</b>	
Thermal and mechanical problems	Steady-State 2D Heat transfer
	Transient 2D Heat transfer
	2D Stress analysis

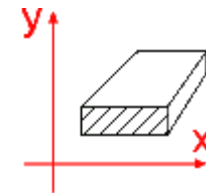


**3D Extruded Electrostatics**

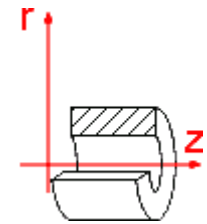


# QuickField 6.0

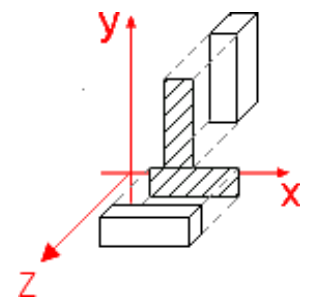
<b>Magnetic analysis suite</b>	
Magnetic Problems	2D Magnetostatics
	2D AC Magnetics
	2D Transient Magnetics
<b>Electric analysis suite</b>	
Electric Problems	2D Electrostatics and 2D DC Conduction
	<b>3D Electrostatics</b>
	2D AC Conduction
	Transient 2D Electric field
<b>Thermostructural analysis suite</b>	
Thermal and mechanical problems	Steady-State 2D Heat transfer
	Transient 2D Heat transfer
	2D Stress analysis



plane-parallel



axisymmetric



3D extrusion



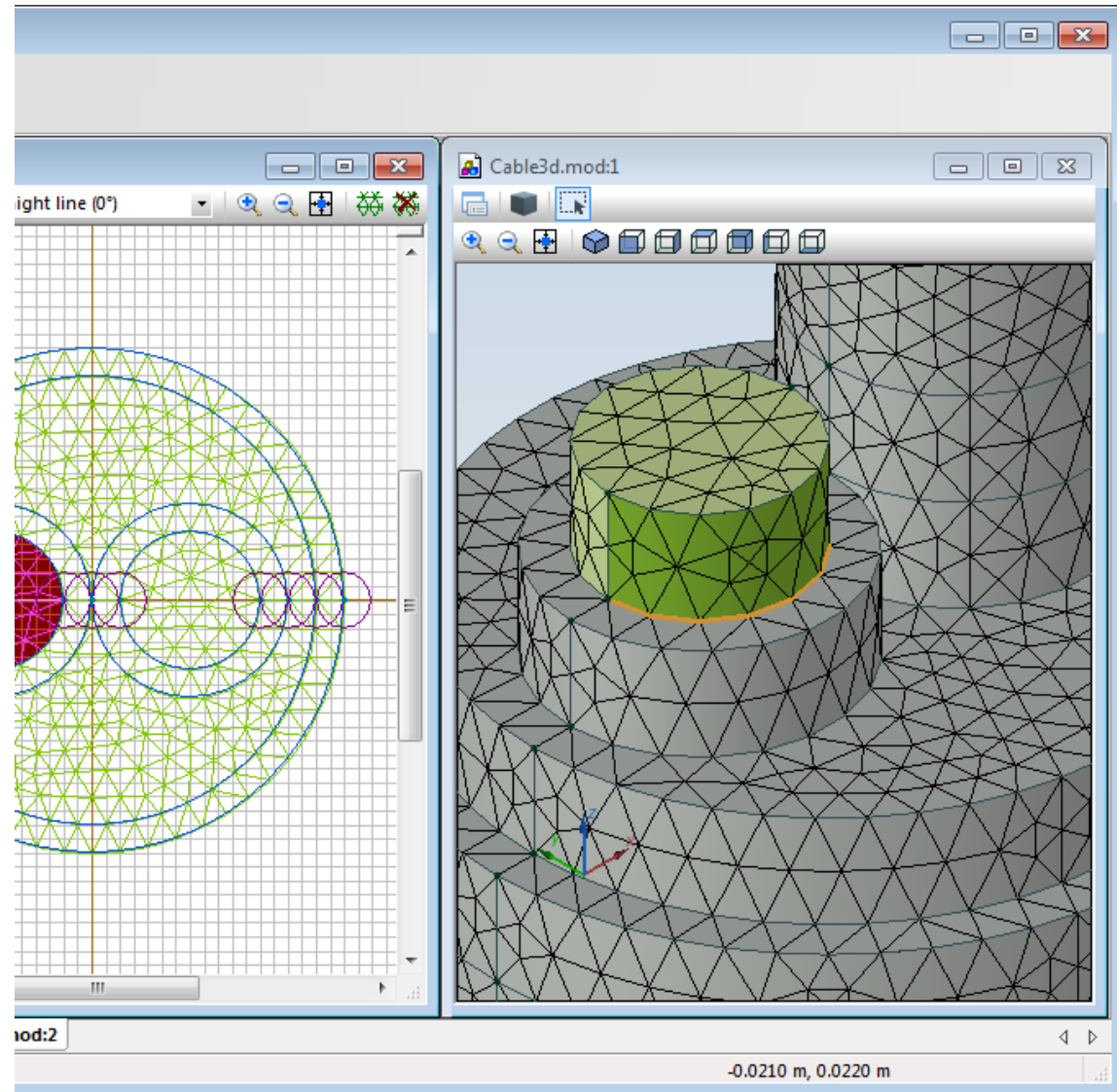
# New type of analysis: 3D Extruded Electrostatics

- Constant isotropic electric permittivity varying by bodies
- Field sources include electric charge or charge density defined in any type of geometric entities: bodies, faces, edges, or vertices
- Dirichlet or Neumann boundary conditions can be applied to any of faces, edges, or vertices



# 3D Preprocessing

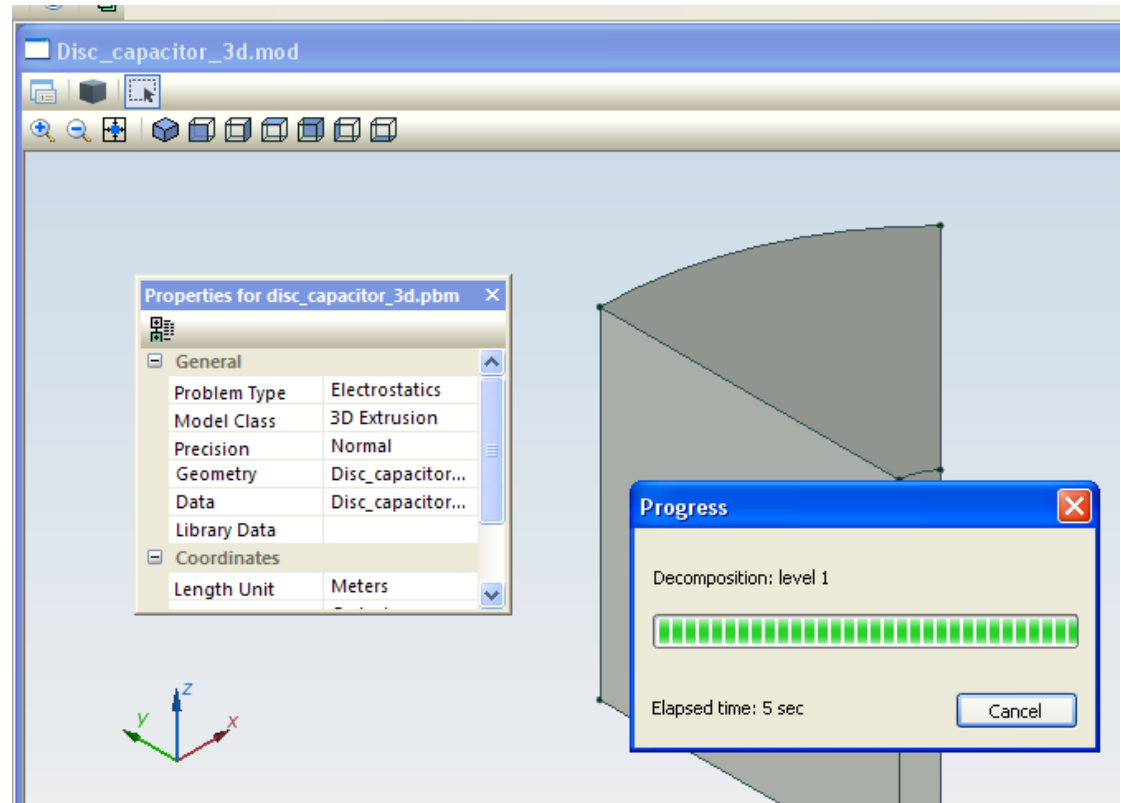
- Automatic conversion of any existent 2D plane-parallel electrostatic model into corresponding 3D model (all planar objects will be attributed by the model depth setting of the 2D problem)
- 3D geometric model creation by a fixed-depth cross-sectional multilayer extrusion of a 2D model
- 3D View mode in the Postprocessor
- Automatic 3D mesh generation controlled by mesh spacing values defined on a set of vertices
- Properties and boundary conditions set by assigning labels to any geometric entity





# 3D Solver

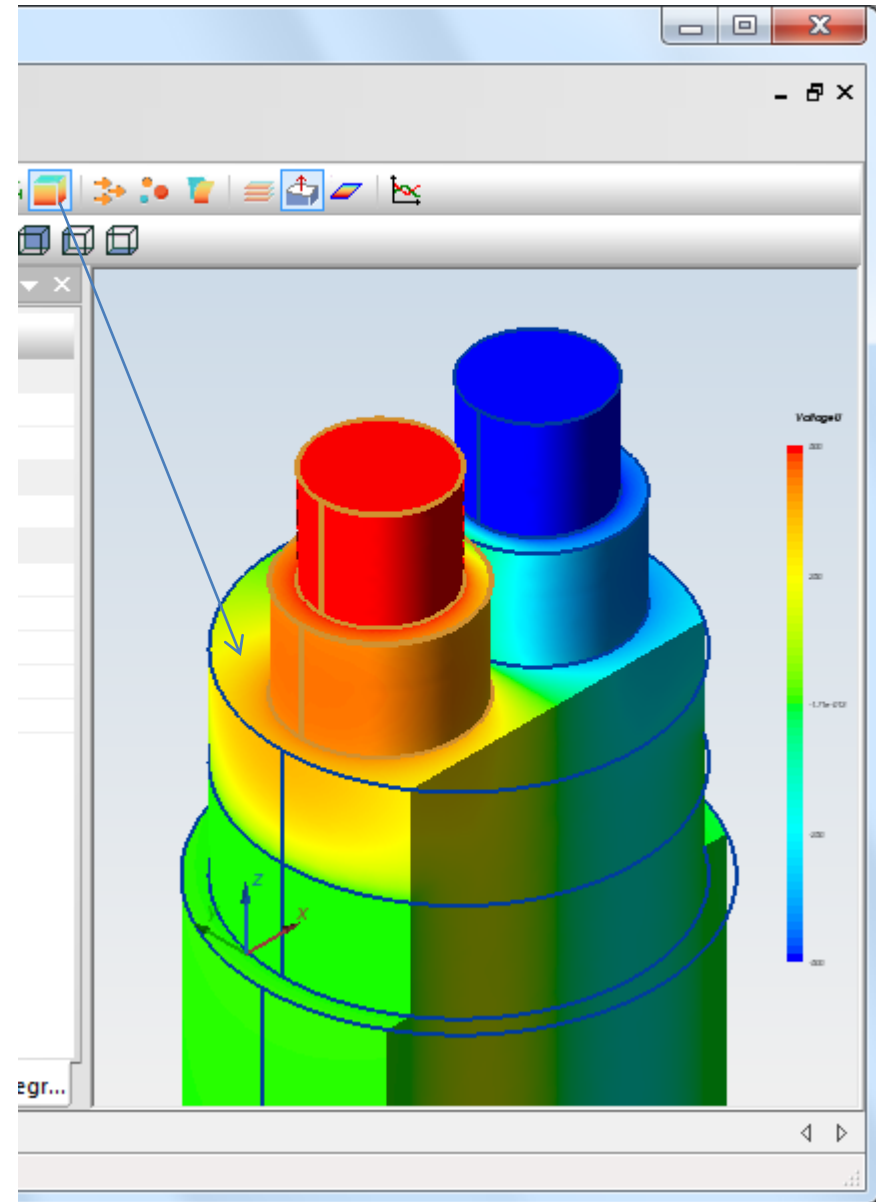
- Geometric Domain Decomposition in 3D with parallelization
- Millions of degrees of freedom in less than a minute on a moderate PC





# 3D Postprocessing

- **Color maps of selected physical quantities in full 3D view, on the arbitrary cross section or on the slices**
- Local value display with robust picking capability
- X-Y plots along the chosen edges
- Vector plots in 3D view
- Isolines on an arbitrary cross section
- Integral quantities over the volumes

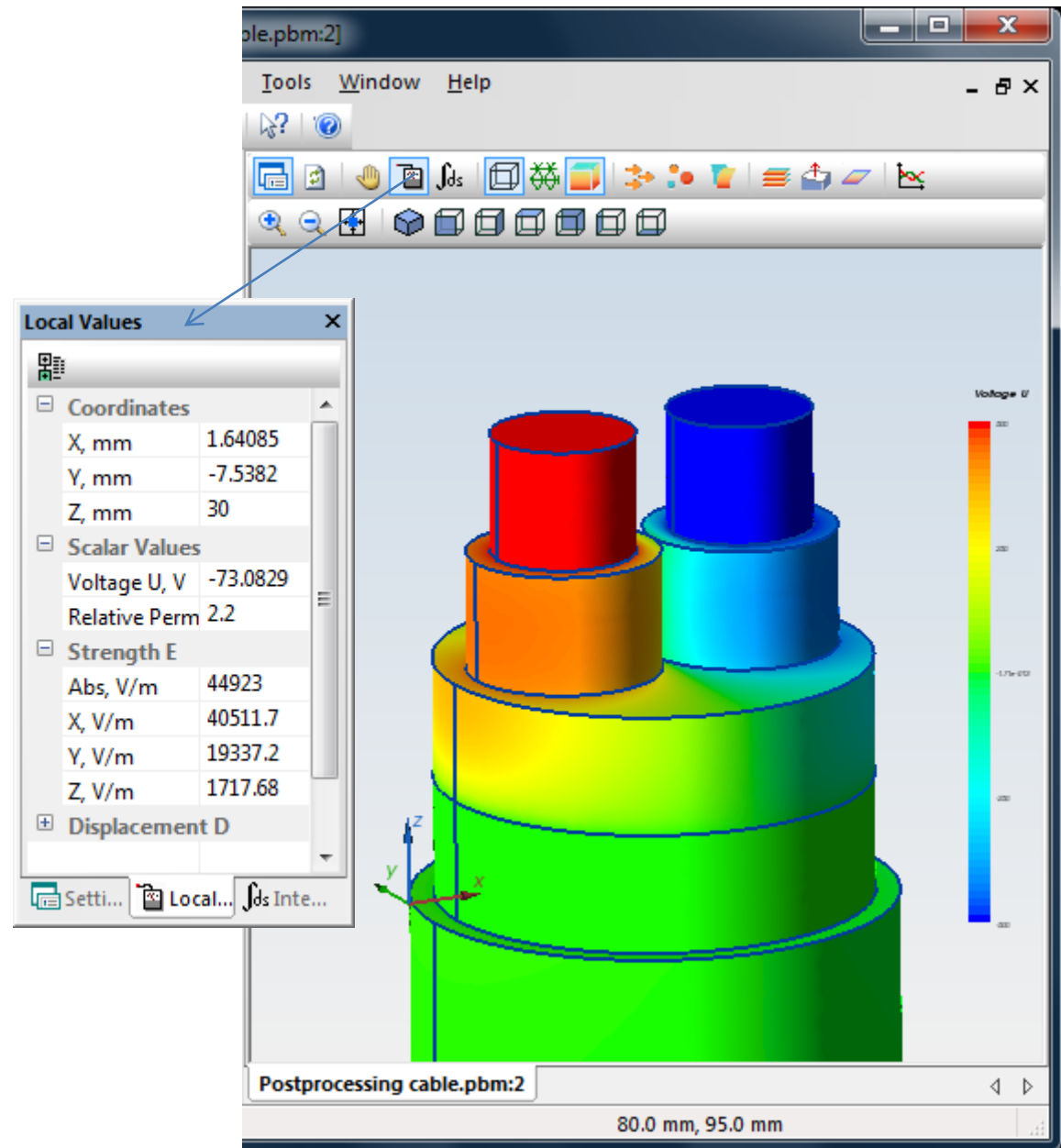






# 3D Postprocessing

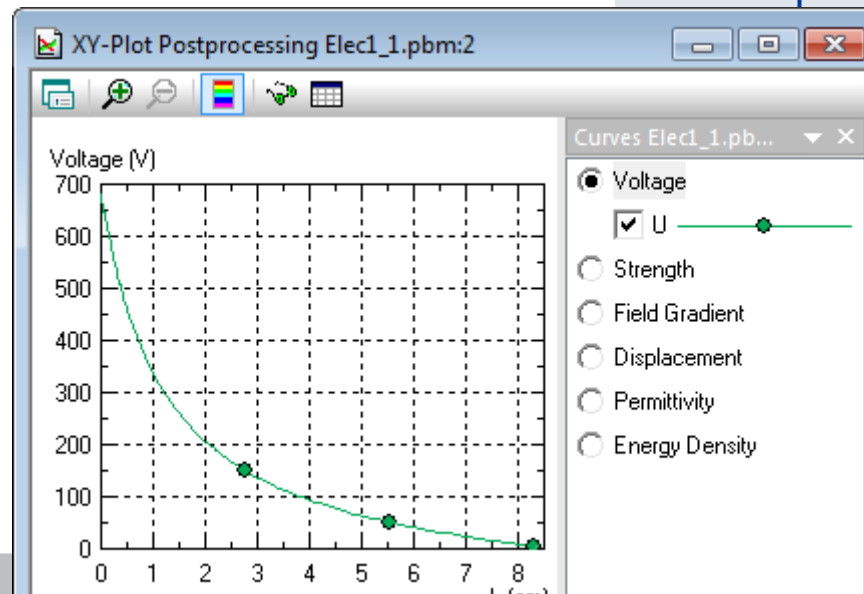
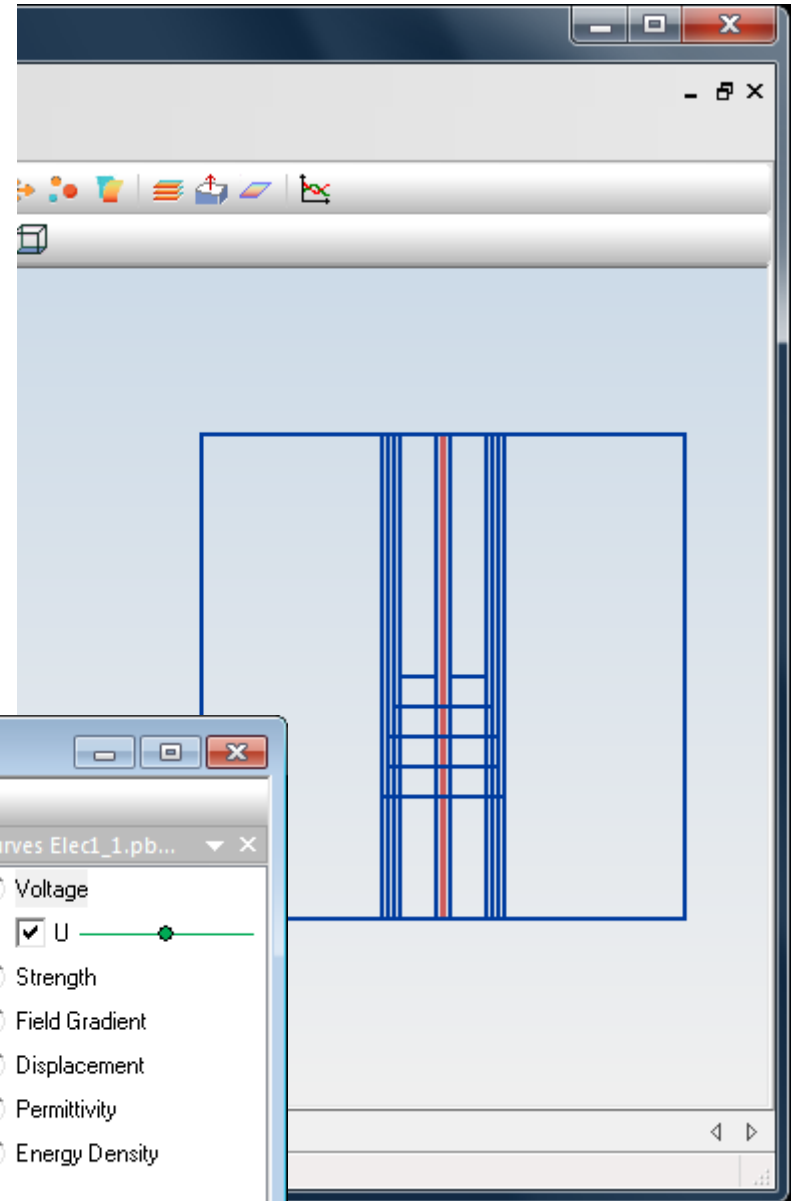
- Color maps of selected physical quantities in full 3D view, on the arbitrary cross section or on the slices
- **Local value display with robust picking capability**
- X-Y plots along the chosen edges
- Vector plots in 3D view
- Isolines on an arbitrary cross section
- Integral quantities over the volumes





# 3D Postprocessing

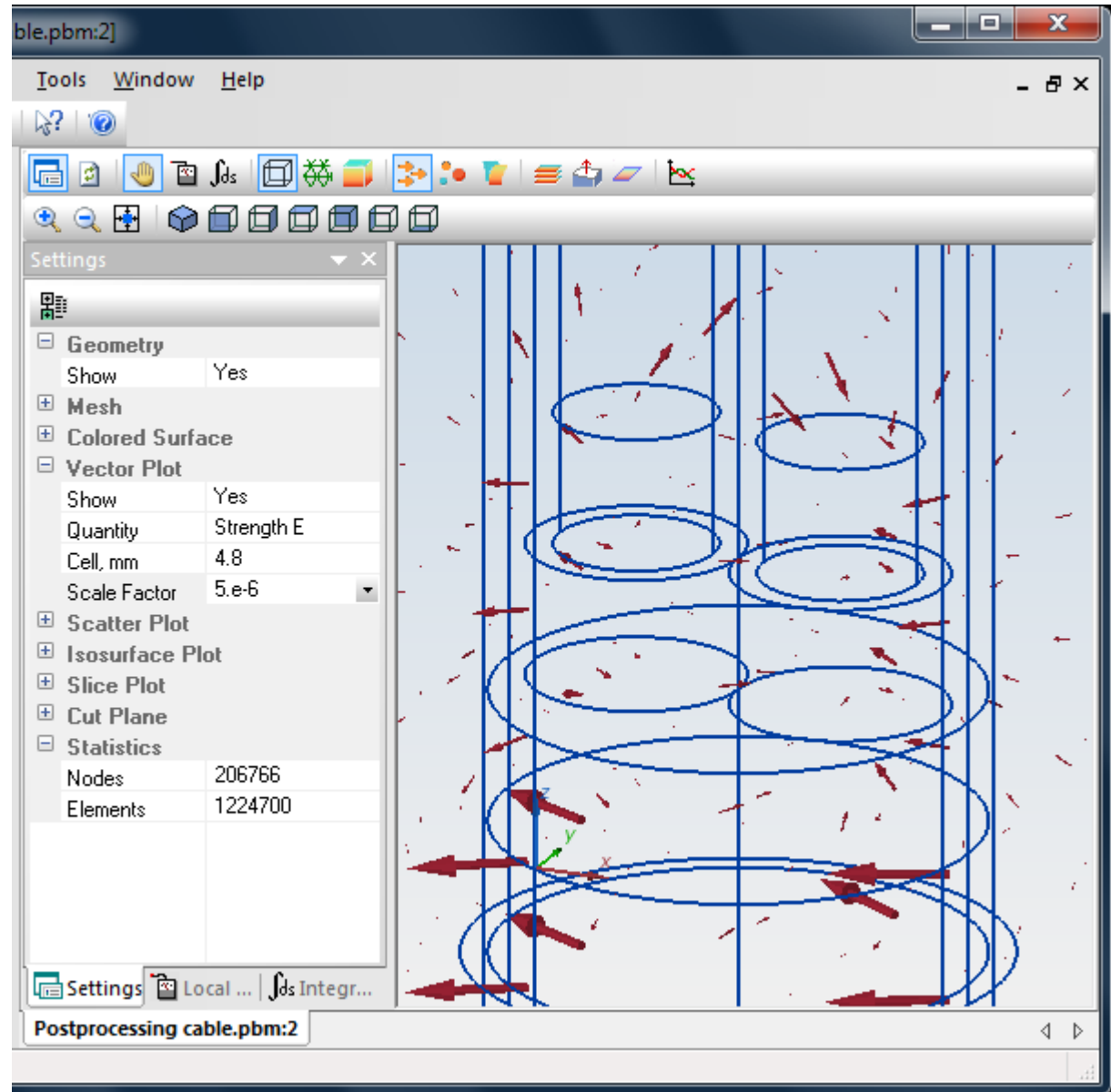
- Color maps of selected physical quantities in full 3D view, on the arbitrary cross section or on the slices
- Local value display with robust picking capability
- **X-Y plots along the chosen edges**
- Vector plots in 3D view
- Isolines on an arbitrary cross section
- Integral quantities over the volumes





# 3D Postprocessing

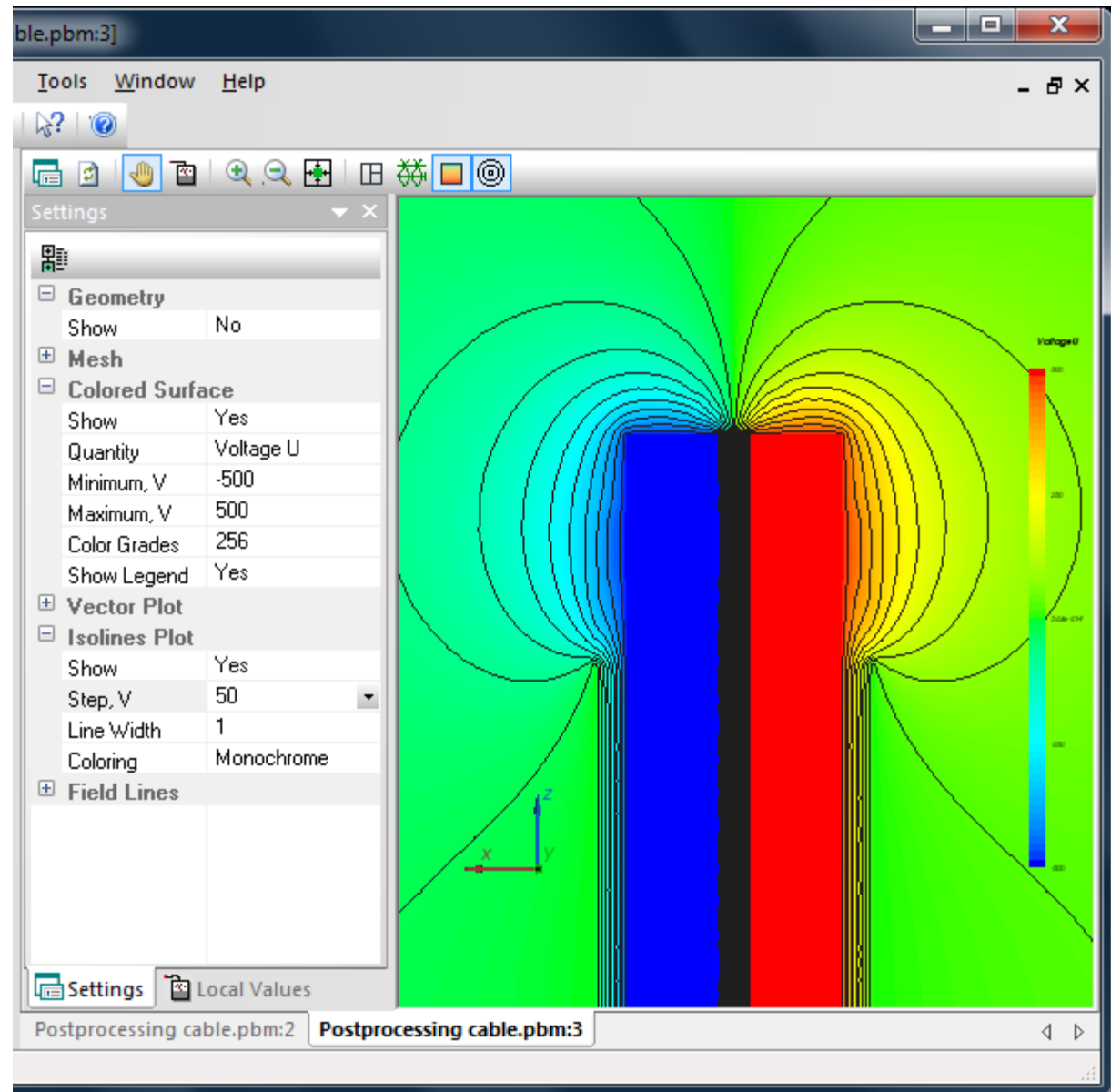
- Color maps of selected physical quantities in full 3D view, on the arbitrary cross section or on the slices
- Local value display with robust picking capability
- X-Y plots along the chosen edges
- **Vector plots in 3D view**
- Isolines on an arbitrary cross section
- Integral quantities over the volumes





# 3D Postprocessing

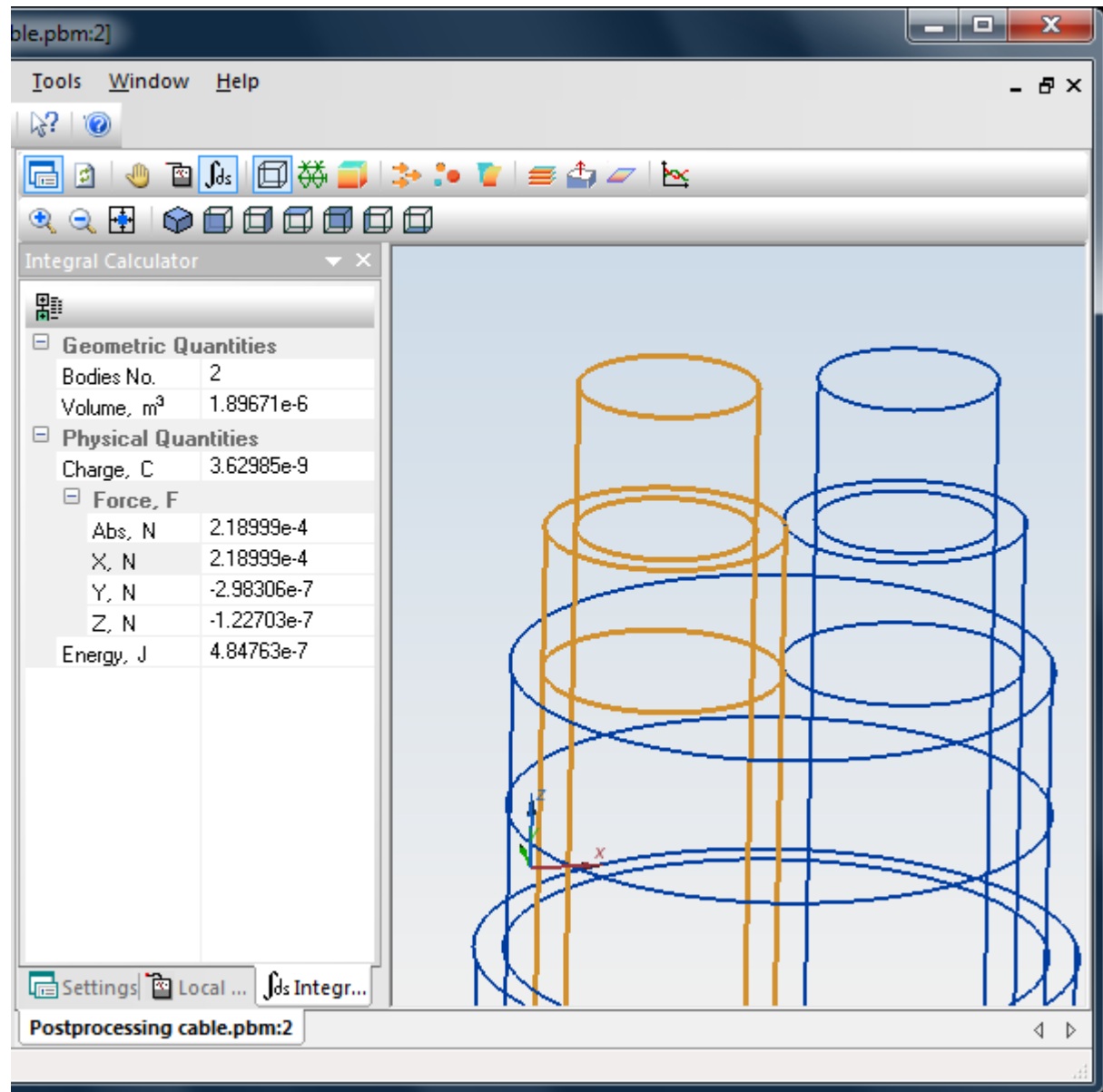
- Color maps of selected physical quantities in full 3D view, on the arbitrary cross section or on the slices
- Local value display with robust picking capability
- X-Y plots along the chosen edges
- Vector plots in 3D view
- **Isolines on an arbitrary cross section**
- Integral quantities over the volumes





# 3D Postprocessing

- Color maps of selected physical quantities in full 3D view, on the arbitrary cross section or on the slices
- Local value display with robust picking capability
- X-Y plots along the chosen edges
- Vector plots in 3D view
- Isolines on an arbitrary cross section
- **Integral quantities over the volumes**





# QuickField 6.0 Editions

	<i>QuickField Student Edition</i>	<i>QuickField Lite Edition</i>	<i>QuickField Professional Edition</i>
<b>Mesh size limit</b>	255 planar nodes	about 4000 planar nodes	No artificial restrictions
<b>Cost</b>	<b>FREE</b>	<b>Calculate quotation online</b> <b><a href="http://QuickField.com">QuickField.com</a>&gt;Product&gt;Order</b>	
<b>License term</b>	permanent	per year	per year or permanent
<b>Network licensing availability</b>	single-user only	License permits <b>unlimited</b> number of concurrent QuickField sessions within a campus	Single-user and agreed number of floating network licenses are available
<b>Licensing requirements</b>	no restrictions	Academic only	No restrictions, however, commercial and academic licensing terms are different



# QuickField 6.0 pricing:

No major changes planned.

Additional functionality does not bring additional costs for customers. Maintenance and update policies will remain intact.



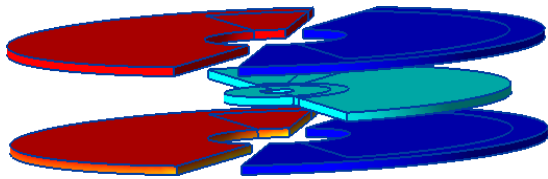
# QuickField 6.0 pricing:

All active QuickField users with  
valid maintenance will get 6.0  
**for free.**

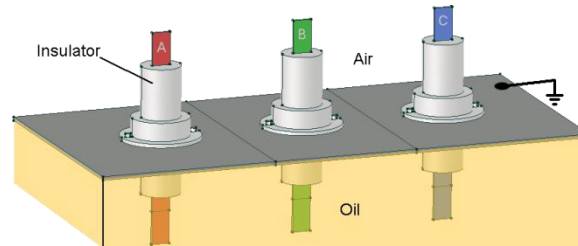




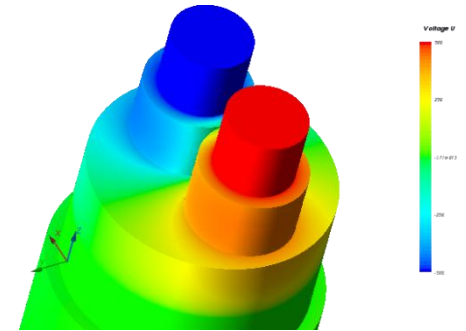
# 3D examples



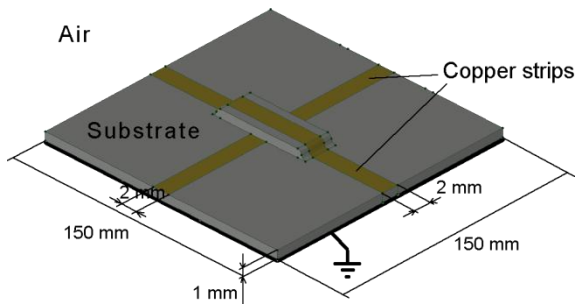
**Variable capacitor**



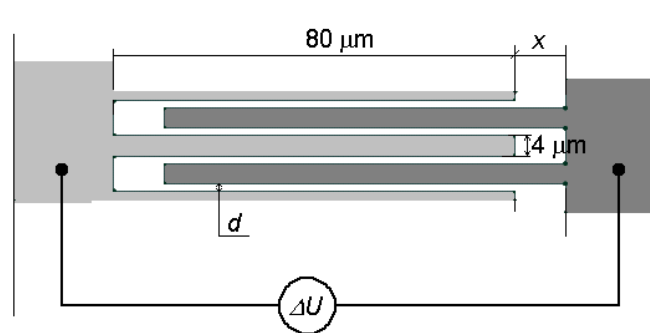
**Insulator**



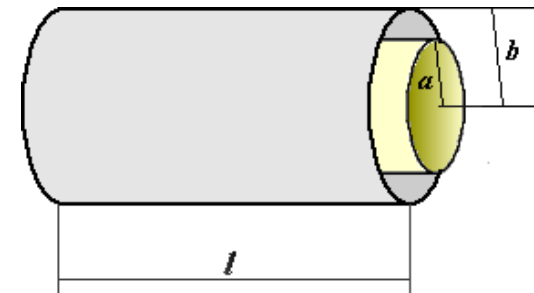
**Cable termination**



**Crossover**



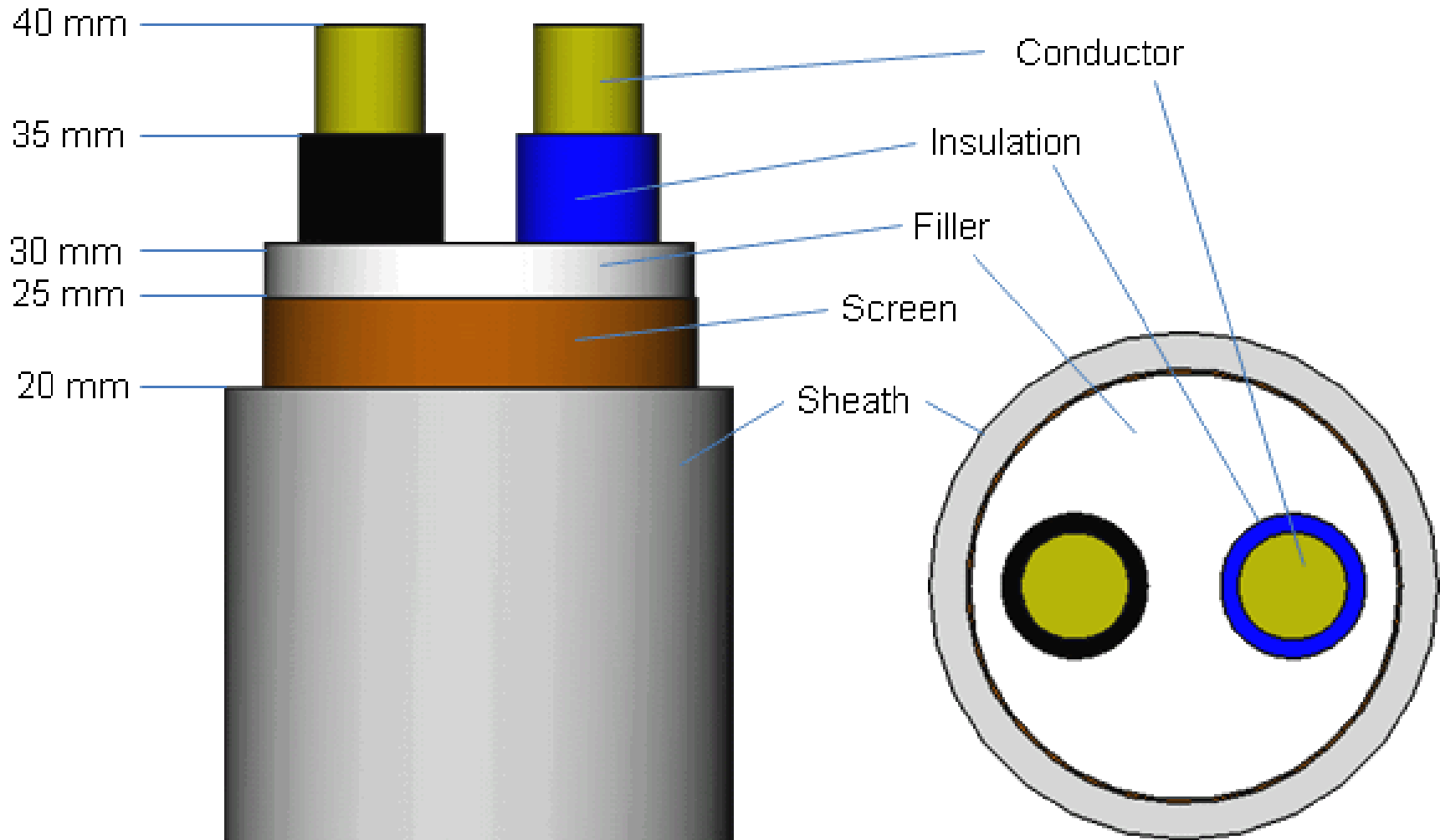
**Comb drive**



**Cylindrical capacitor**



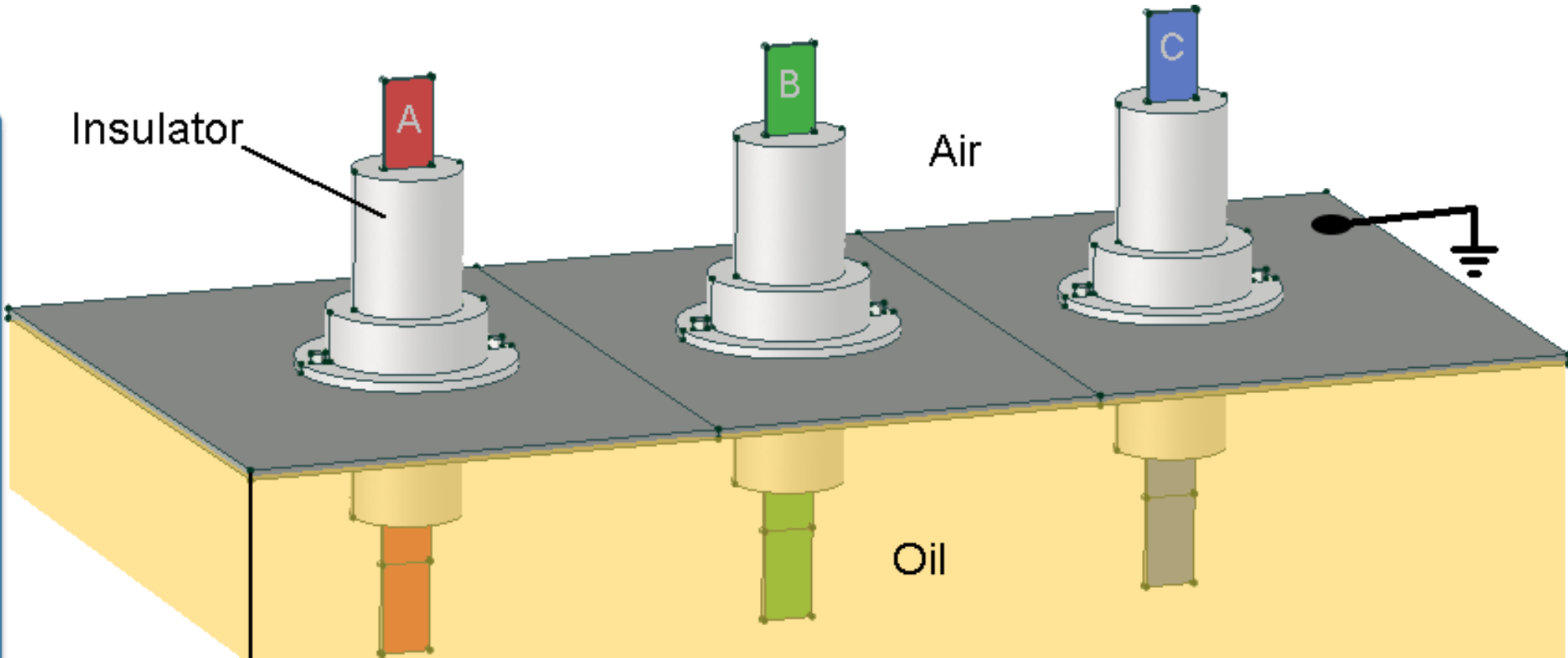
# Cable termination



**Task:** find electric stress distribution.



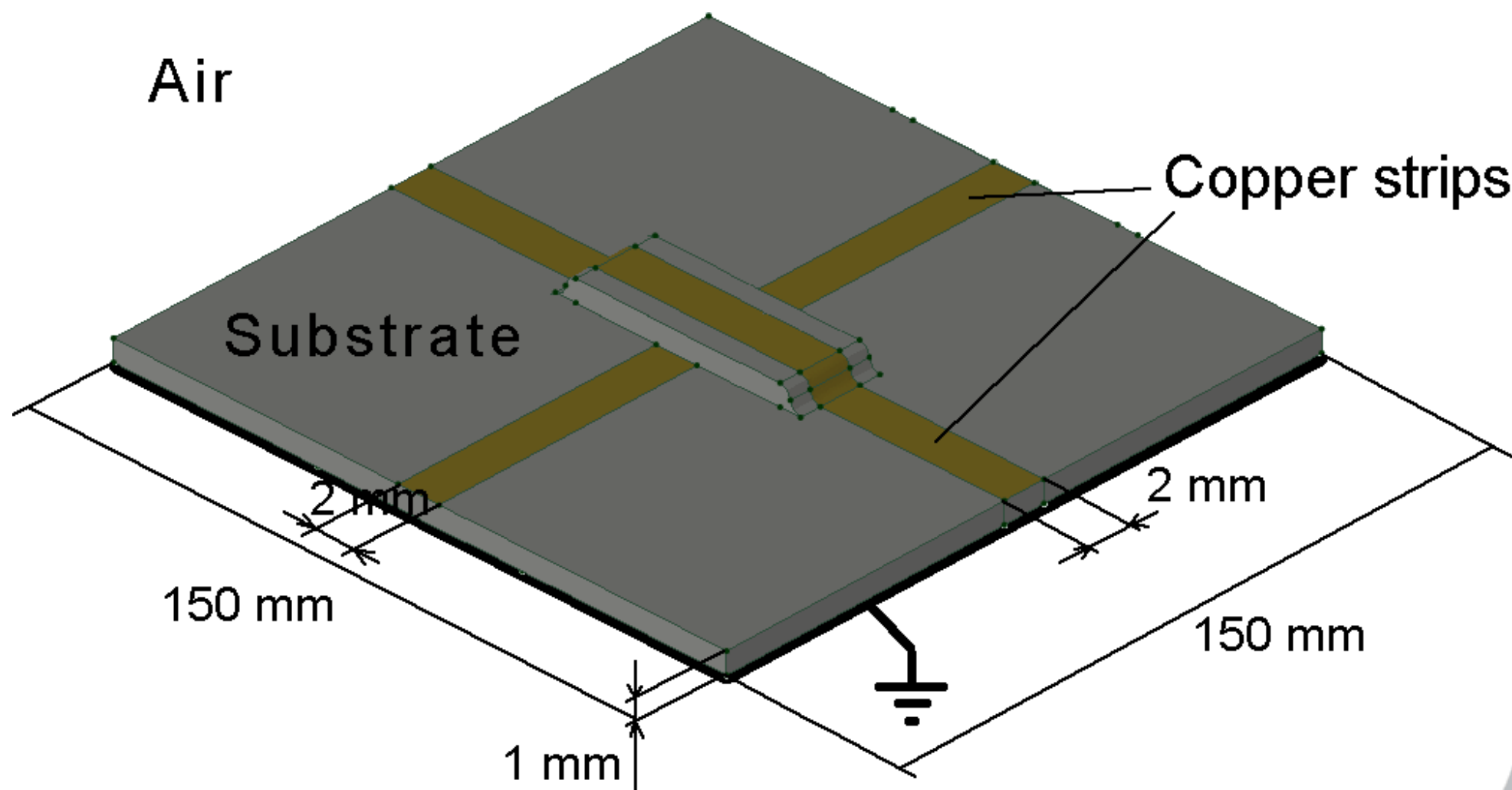
# Insulator



**Task:** find electric stress distribution.



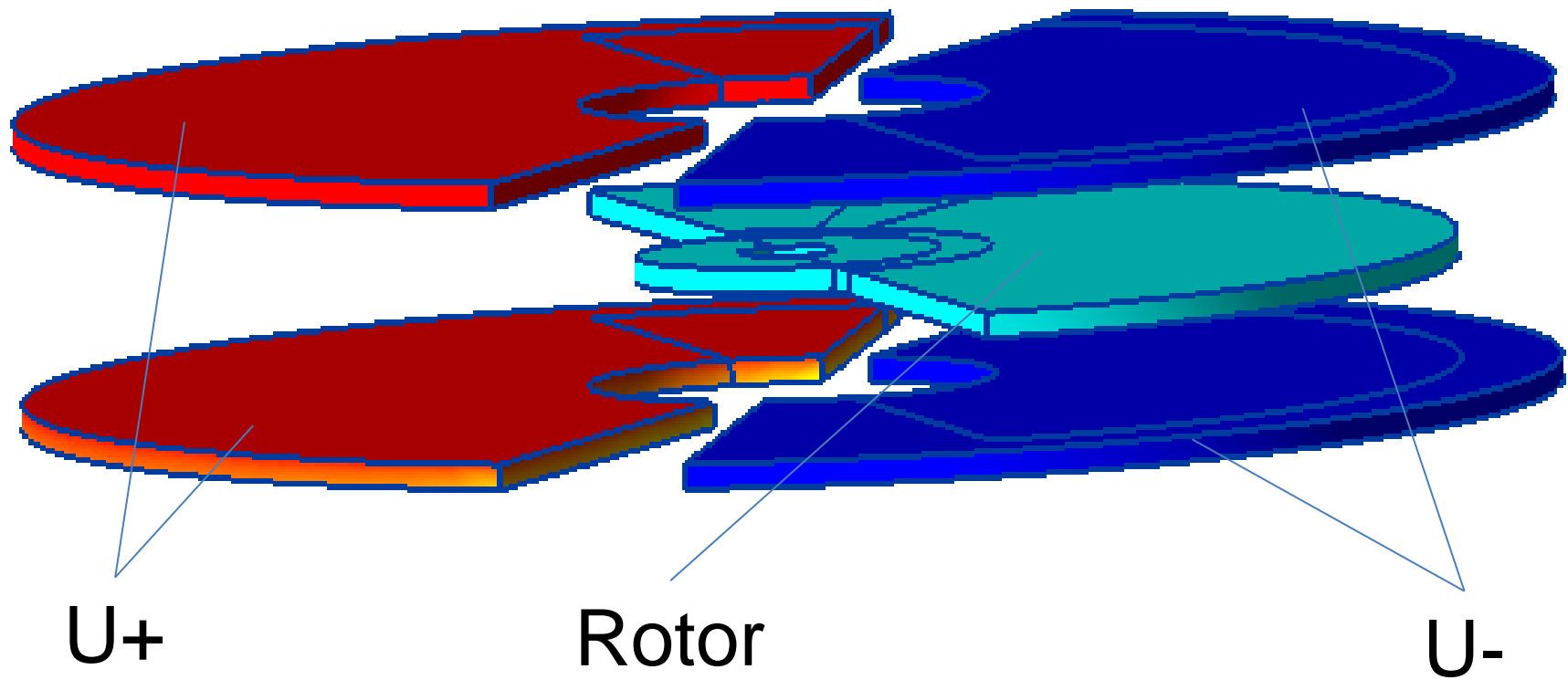
# Crossover



**Task:** find mutual capacitance.



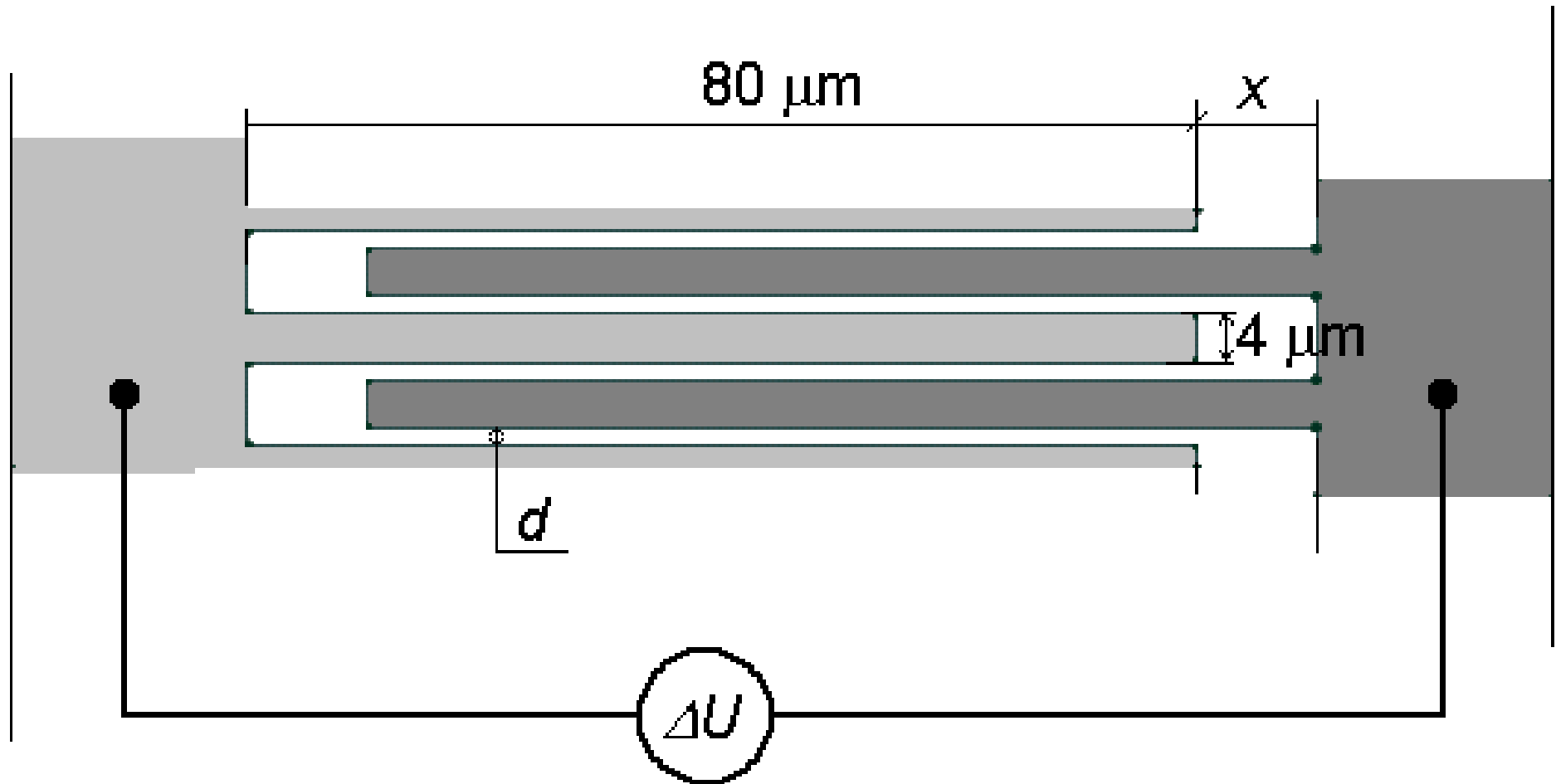
# Variable capacitor



**Task:** find mutual capacitance.



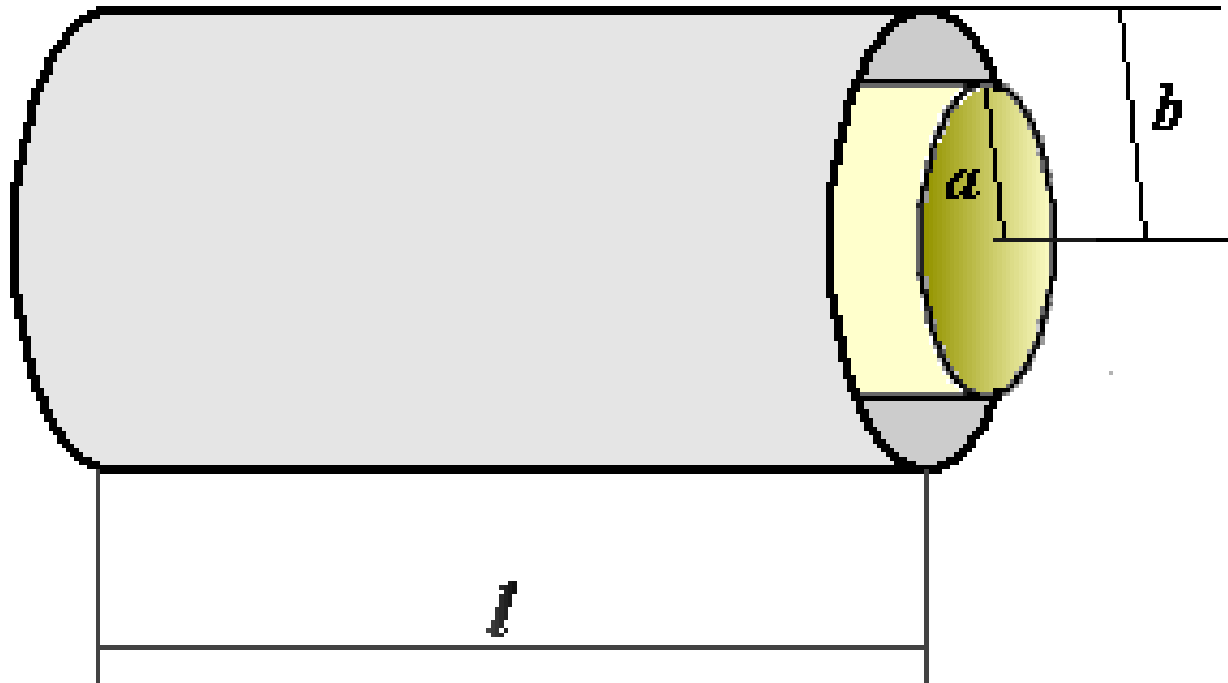
# Comb drive



**Task:** find force



# Cylindrical capacitor



$$a = 5 \text{ mm}, b = 6 \text{ mm}, l = 40 \text{ mm}$$

**Capacitance:**  $C = 2\pi\epsilon\epsilon_0 * l / \ln(b/a) = 2,44e-11 \text{ [F]}$

# Future 3D developments

## 3D electrostatics:

- 3D geometry import from popular CAD systems (including freeware products)
- Better control of the mesh density in the 3-d dimension
- Acceleration of 3D solvers

**Bringing more types of analysis to 3D (Thermal, Magnetic, Time-Harmonic, Transients...)**

